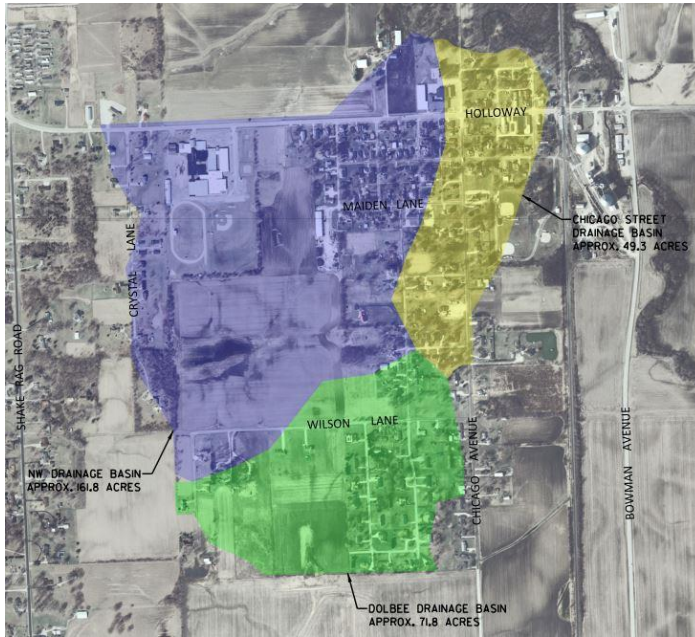


VILLAGE OF BISMARCK, ILLINOIS

STORM SEWER SYSTEM



Location

Bismarck, Illinois

Timeline

2016 – Present



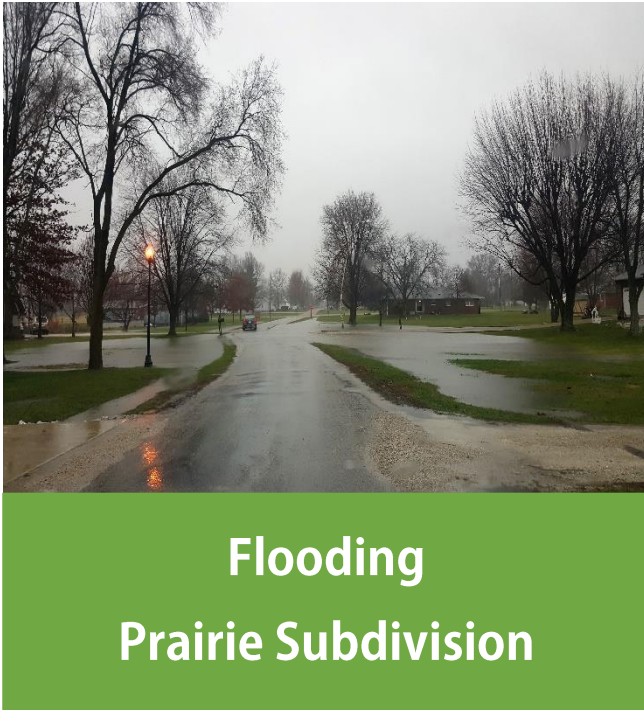
The Village of Bismarck was originally incorporated to resolve storm drainage issues in the area. The Village is currently in the process of applying for low-interest loan funding from the Illinois Environmental Protection Agency to construct adequate storm sewer facilities, Village-wide, and plan to institute a storm water utility fee in 2018 to help pay for the proposed improvements.

Scope of Work:

- Storm Sewer System Facilities Plan (Preliminary Engineering Report)
- Application for IEPA funding through the Water Pollution Control Loan Program (WPCLP)
- Community Meetings
- Storm Water Utility Ordinance

VILLAGE OF BISMARCK, ILLINOIS

STORM SEWER SYSTEM



The Challenges:

1. Very few existing drainage facilities are present within the Village
2. Existing drainage facilities are inadequately sized
3. Community financial support for capital improvements
4. Poorly draining soils and sanitary sewer cross connections

Solutions provided by C2:

1. C2 developed a facilities plan (PER) to identify resolutions to Village-wide flooding and the costs associated the proposed improvements
2. C2 assisted with applications for low-interest funding and multiple community outreach events
3. C2, along with the Village's attorney, is currently assisting the Village with the development of a storm water utility ordinance to generate revenue for the proposed improvements and a storm water use ordinance to prevent future development from compounding existing drainage issues within the Village
4. The facilities plan that C2 Engineers developed highlights the identification and elimination of illegal septic system discharges to storm sewer facilities to improve the storm water quality being discharged downstream

C2 Engineers has provided preliminary design, financial analysis, community outreach, ordinance development, and coordination with funding agencies. Future services include design and construction engineering of the proposed improvements.

Reference: Greg Lewis
217.304.6998
gklewis55@gmail.com